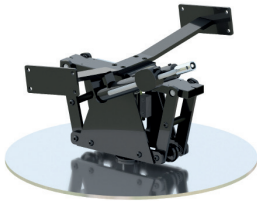
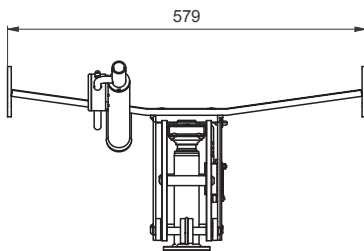
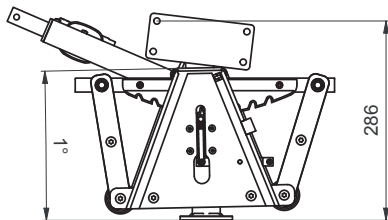
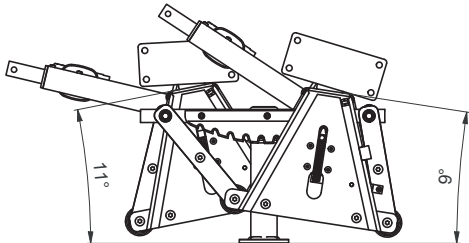


8800 GLEITER /ROCKER



- > All mechanisms are available as a standard option
- > All mechanisms can be customized to accommodate special requirements
- > All mechanisms can be combined with more products for complete solution

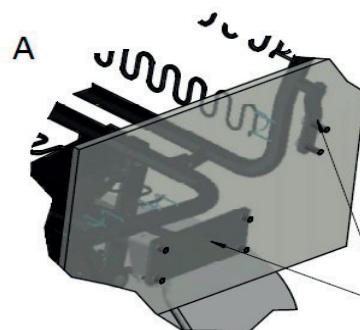
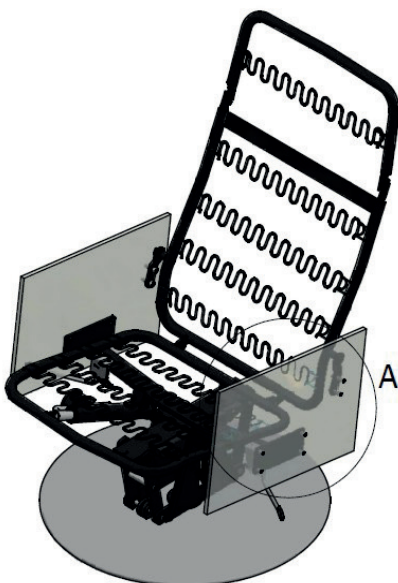


Functionality and benefits

- > The Gleiter is unique in its smooth and highly comfortable gliding function (pendulum)
- > Synchronized adjustment of seat and back
- > Ergonomic and comfortable sitting position
- > Standard option comes without a lock mechanism
- > We can offer alternative solutions with variable lock systems upon request
- > We can offer a footstool with the same functionality for a complete solution
- > Optional for covering construction to fit into a design

Technical specifications

- > Standard of 116° on back frame in sitting position
- > Seat front elevates from 340 to 383 mm in reclined position
- > Reclining movement of 16°
- > Prepared with sealed ball bearings
- > *The illustration below shows combination with seatframe 7080-222-001, backframe 7313-325-001, and click lock system set 7353-27*



The bridge and backframe need connection with armrest for support and functionality



- > Simplify your supply chain
- > Secure strong cooperation
- > Experience hands-on support